

Hoot Hoot

KIM SCHAEFER



100
years



Hootin' Around Quilt designed by:
Kim Schaefer • Quilt Size: **36" x 54"**
Skill Level: **Beginner**
andoverfabrics.com

andover

•
•
• makower.uk
•

Free Pattern Download Available

1384 Broadway New York, NY 10018
Tel. (800) 223-5678 • andoverfabrics.com

Revised 1/11/2022

Hootin' Around Quilt

Introducing Andover Fabrics new collection: HOOT HOOT by Kim Schaefer

Quilt designed by Kim Schaefer



Quilt finishes 36" x 54"

These colorful owls, perched in a magical tree and surrounded by forest friends, will bring smiles and joy to nearly everyone. What a fun variety of prints to mix in the border. The quilt is perfect for a beginner's project.

Cutting Directions

Note: Read assembly directions before cutting patches. All measurements are cut sizes and include 1/4" seam allowances. A fat 1/8 is a 9" x 20"-22" cut of fabric. WOF designates the width of fabric from selvedge to selvedge (approximately 42" wide).

Fabric A

Fussy-cut (1) panel 23 1/2" x 43 1/2", cut crosswise
(Read Step 1)

Fabric B

Cut (2) side borders 3 1/2" x 43 1/2", cut crosswise
(Read Step 1)
Cut (2) borders 3 1/2" x 30", cut crosswise

Fabric C

Cut (4) squares 4 1/2" x 4 1/2" for border corners

16 Prints

From each:
Cut (4-5) rectangles 2 1/2" x 4 1/2" (Cut 74 total)
Yardage is sufficient to cut more of your favorite prints as you wish.

Binding

Cut (5) strips 2 1/2" x WOF for binding

Backing

Cut (2) panels 31" x 44", pieced to fit quilt top with overlap on all sides

Fabric Requirements

		Yardage	Black	Blue
Fabric A	center	1 panel (2/3 yard)	9759 K	9759
Fabric B	border	1/2 yard	9766 E	9766 G
Fabric C	corners	fat 1/8 yard	9766 G	9766 E
16 Prints	border	fat 1/8 yard each	same for either	
		9760 K 9760 L	9761 C	9761 K
		9761 L 9762 E	9762 KE	9762 KP
		9762 P 9763 B	9763 G	9764 B
		9764 L 9764 Y	9765 E	9765 G
Binding		5/8 yard	9762 KE	9762 KP
Backing		2 1/2 yards	9762 E	9762 P

Making the Quilt

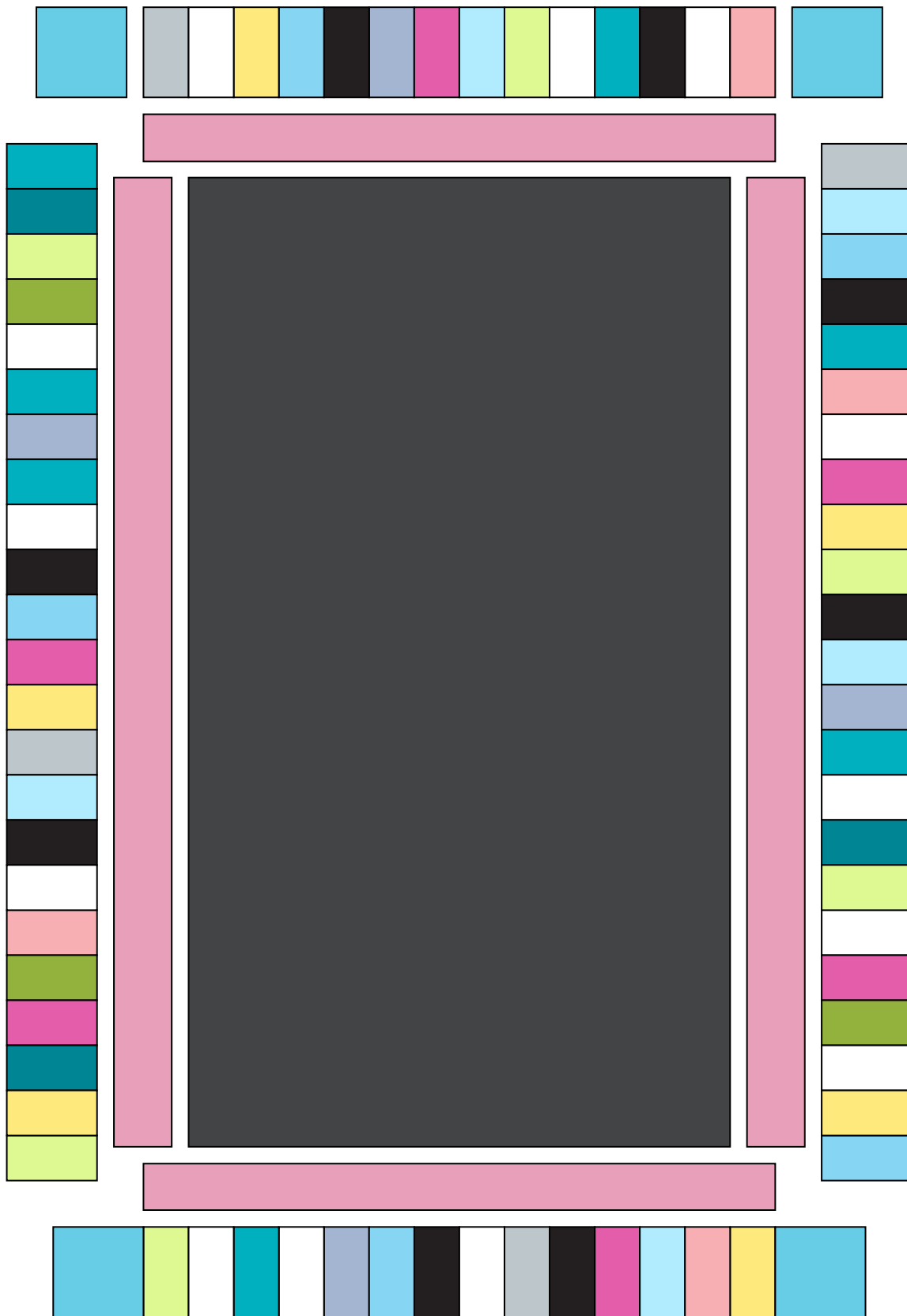
1. Fussy-cut the center panel as large as possible to include an equal amount of the black solid frame, and 1/4" seam allowances all around. Cut the Fabric B borders as given. They are slightly larger than needed.
2. Referring to the Quilt Diagram, sew long Fabric B borders to the sides. Trim the ends even with the top and bottom of the panel if necessary. Press seam allowances toward the border. Stitch short Fabric B borders to the top and bottom. Press seam allowances toward the border. Trim the quilt, centering the panel so that the striped border is the same width at the top and bottom, and the side borders are the same width. Trim bordered panel to 28 1/2" x 46 1/2".
3. Arrange the print rectangles all around the quilt—23 rectangles in each side border and 14 in the top and bottom borders. Stand back to check that no print touches itself. Looking through a camera or the wrong end of binoculars may help you find mistakes. Once you are satisfied with the arrangement, join the rectangles to make 4 borders.
4. Sew the side borders to the quilt. Sew Fabric C squares to ends of remaining borders. Sew borders to the top and bottom.

Finishing the Quilt

5. Layer the quilt with batting and backing and baste. Quilt in the ditch around borders and patches. Quilt around the printed motifs in the center panel. Bind to finish the quilt.



100
years



Quilt Diagram

Hoot Hoot

KIM SCHAEFER

a
100
years



9759 K



9759 B



9761 C



9761 K



9761 L



9760 K



9760 L



9762 E



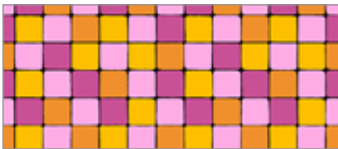
9762 KE



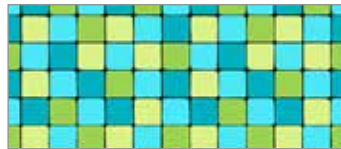
9762 KP



9762 P



9765 E



9765 G



9766 E



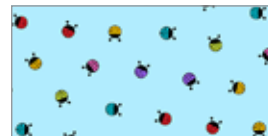
9766 G



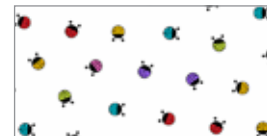
9763 B



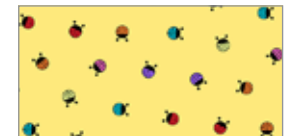
9763 G



9764 B



9764 L



9764 Y

All fabrics are used in featured quilt pattern. Panel fabric is shown at 15%, all other fabrics shown are 25% of actual size.

andover

makower uk

Free Pattern Download Available

1384 Broadway New York, NY 10018
Tel. (800) 223-5678 • andoverfabrics.com